

ROAD INDEX

R	ROCK CREEK RD	D-3
S	SAMWILL DR	C4-C5
	SISSON RD	E6-E8
	SOUTH BROWN RD	B6-B8
	SUMNER RD	F1-F2
T	TAYLOR WELLS RD	CG
U		
V	VENUS RD	E3E4
W	WILLIAMS RD	E1E3
	WOODIN RD	A4D4
	WILLOW DR	B3
	WILLIAMS LINE	D1
X		
Y		
Z		

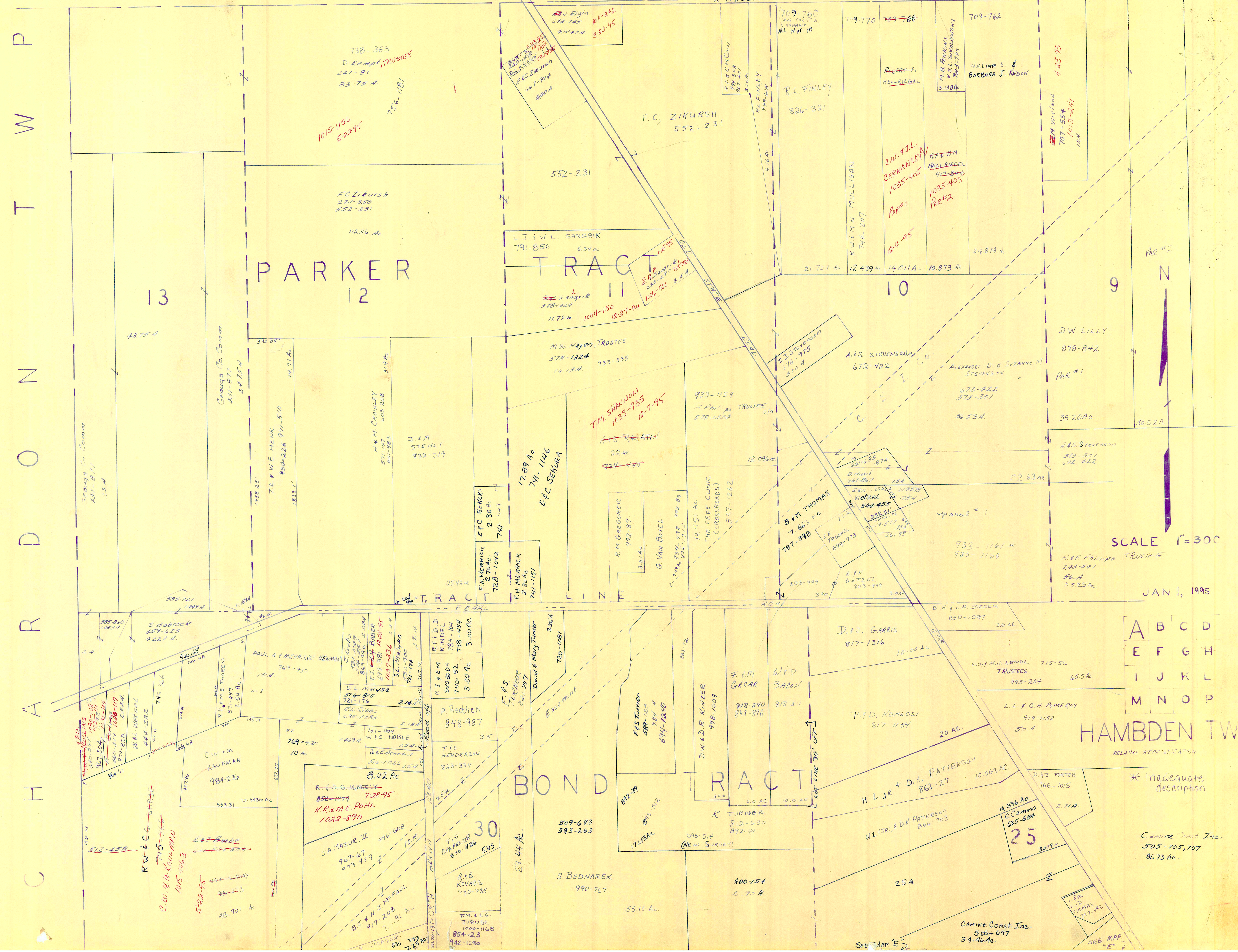
① HAMB DEN ELEMENTARY SCHOOL
 ② HAMB DEN CONGREGATIONAL CH.
 ③ CHRISTIAN & MISSIONARY ALLIANCE CH.
 ④ HAMB DEN CEMETERY
 ⑤ HAMB DEN VOL. FIRE DEPT.
 ⑥ HAMB DEN TOWN HALL

HAMB DEN TOWNSHIP

SCALE = 1" = 2000'
 ROBERT L. PHILLIPS,
 GEAGA COUNTY ENGINEER

— UNPAVED ROAD
 — PAVED ROAD
 - - - COUNTY LINE
 + + + RAILROAD
 - - - TOWNSHIP LINE
 - - - CORPORATION LINE

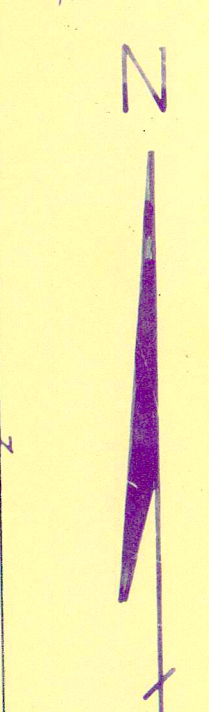
L A K E C O U N T Y



PARKER TRACT

BOND TRACT

HAMBLEN TWP



SCALE 1"=300'

JAN 1, 1995

A	B	C	D
E	F	G	H
I	J	K	L
M	N	O	P

RELATIVE REPRESENTATION

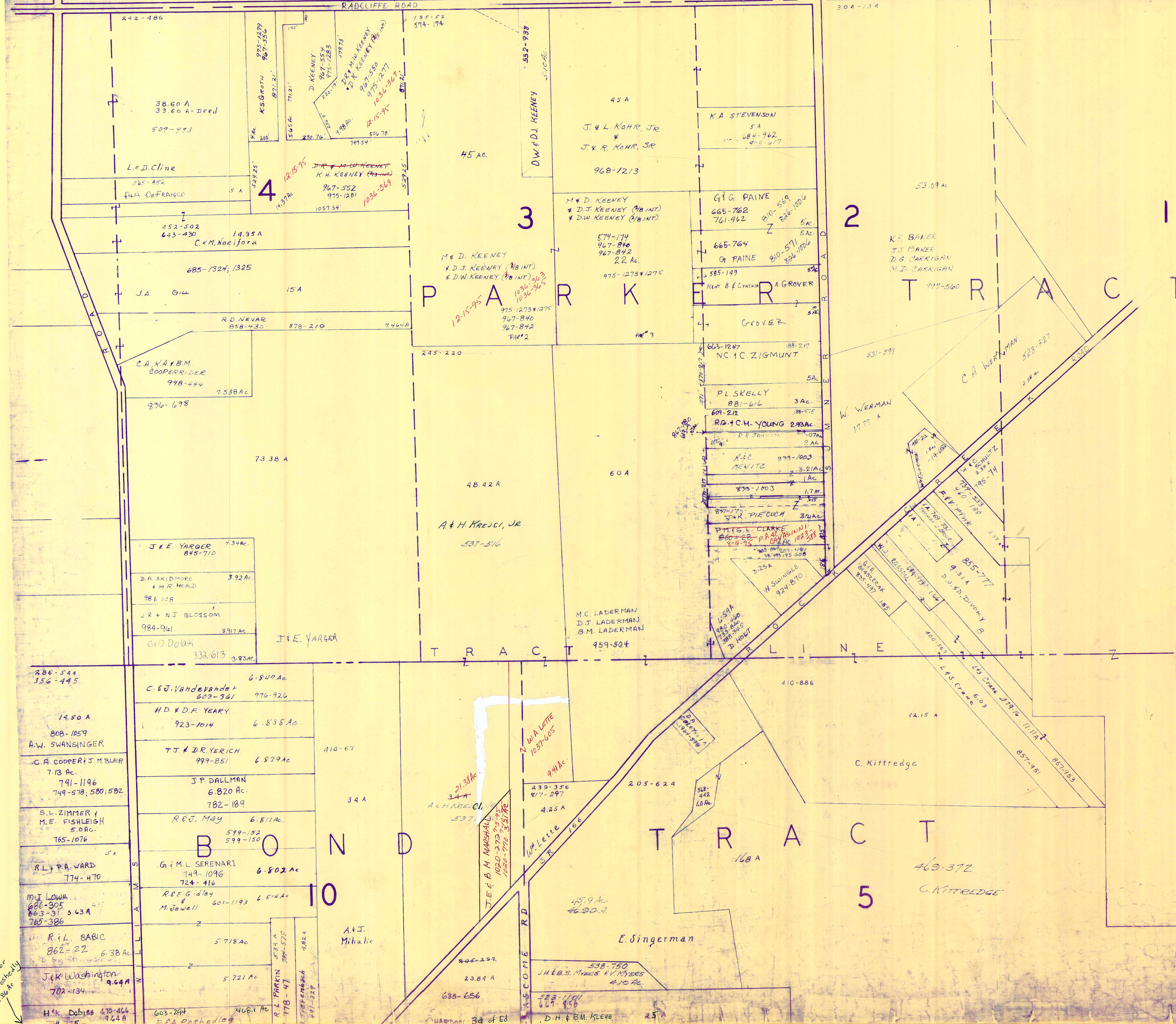
* Inadequate description

Camino Const. Inc. 505-705,707 81.73 Ac.

SEE MAP E

SEE MAP E

L A K E C O U N



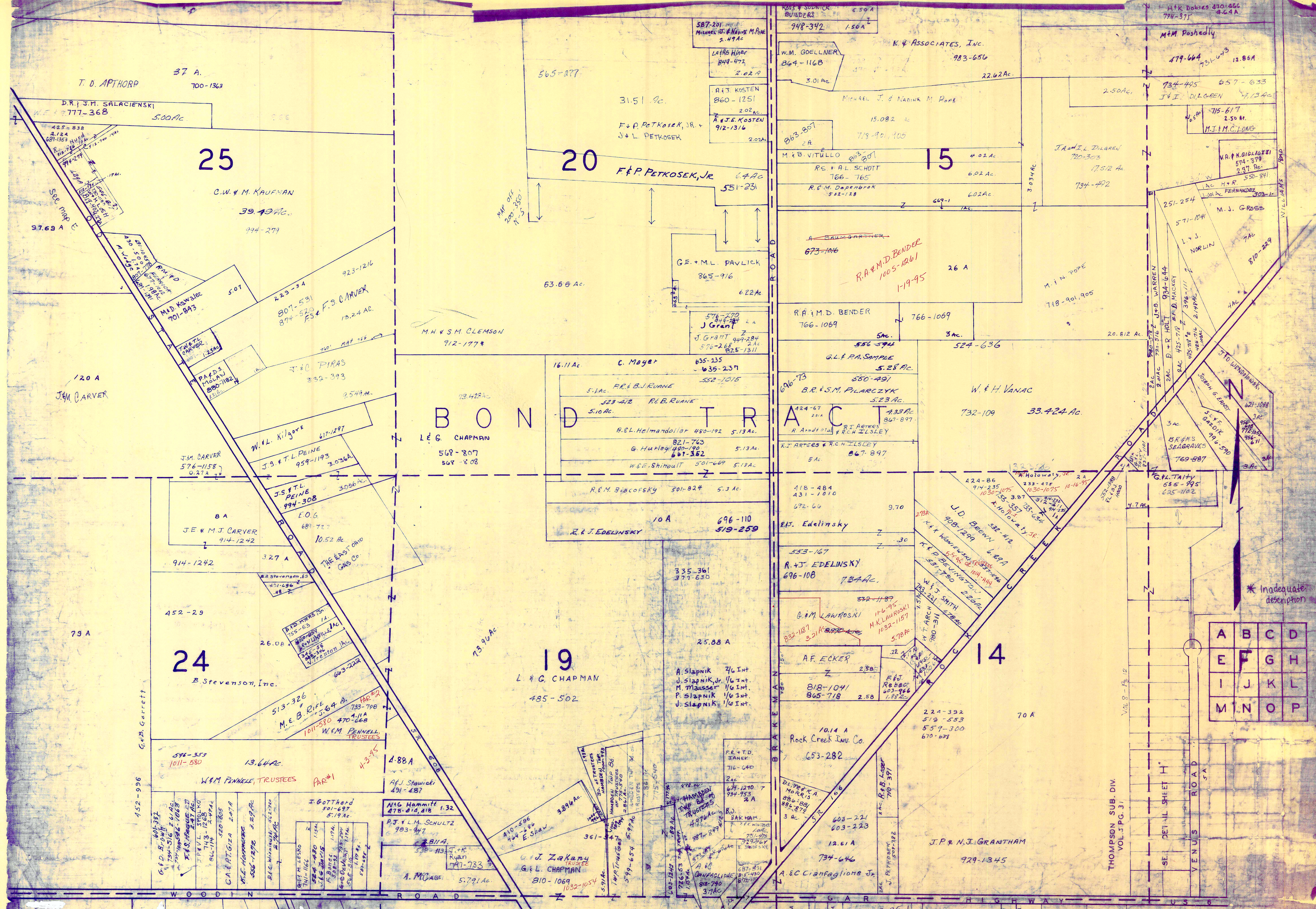
SCALE 1" = 300'
JAN. 1, 1995

A	B	C	D
E	F	G	H
I	J	K	L
M	N	O	P

HAMDEN TWP
RELATIVE REPRESENTATION

* Inadequate description

See Map 'F' for
M.F.M. Parcelly
12.96 Ac



BOND TRACT

A	B	C	D
E	F	G	H
I	J	K	L
M	N	O	P

HAMB DEN TWP

SCALE 1" = 300'

JAN 6, 1995

RELATIVE REPRESENTATION

SEE DETAIL SHEET 7 CTR

SEE PAGE J

SEE PAGE J

SEE PAGE J

SEE PAGE J

SEE PAGE J

SEE PAGE J

SEE PAGE J

SEE PAGE J

SEE PAGE J

SEE PAGE J

18

13

25

20

15

24

19

14

THOMPSON SUB. DIV. VOL. 3 PG. 31

VENUS ROAD

SEE DETAIL SHEET H

Venus Road

SEE PAGE J

SEE PAGE J

SEE PAGE J

SEE PAGE J

* Inadequate description

R.A. & M.D. BENDER
1005-1261
1-19-95

J. Grant
578-270
944-284
576-268
825-1311

C. Mayer
635-135
635-237

R.E. & B.J. RUANE
523-412
510 AC.

B.L. Helmandollar
480-192
513 AC.

G. Hutley
480-190
607-362

W.F. Shinduit
501-669
512 AC.

R.F.M. Surofsky
501-824
513 AC.

R. & J. EDELINSKY
10 A
696-110
519-259

335-361
377-630

25.88 A

A. Slapnik 7/6 Int.
J. Slapnik, Jr. 1/6 Int.
M. Mausser 1/6 Int.
P. Slapnik 1/6 Int.
J. Slapnik 1/6 Int.

10.14 A
Rock Creek Inv. Co.
653-282

12.61 A
734-646

10.14 A
Rock Creek Inv. Co.
653-282

12.61 A
734-646

10.14 A
Rock Creek Inv. Co.
653-282

12.61 A
734-646

10.14 A
Rock Creek Inv. Co.
653-282

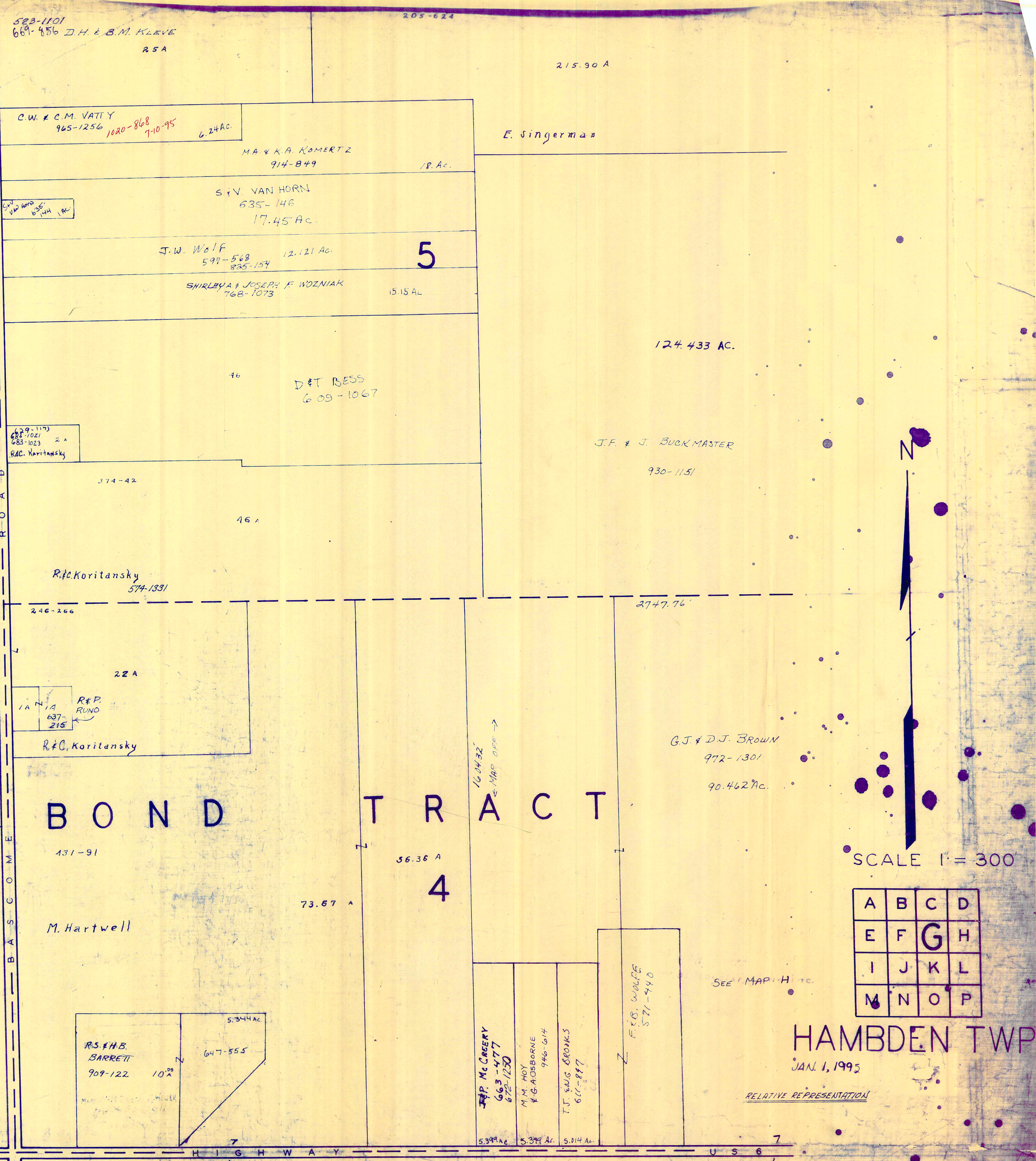
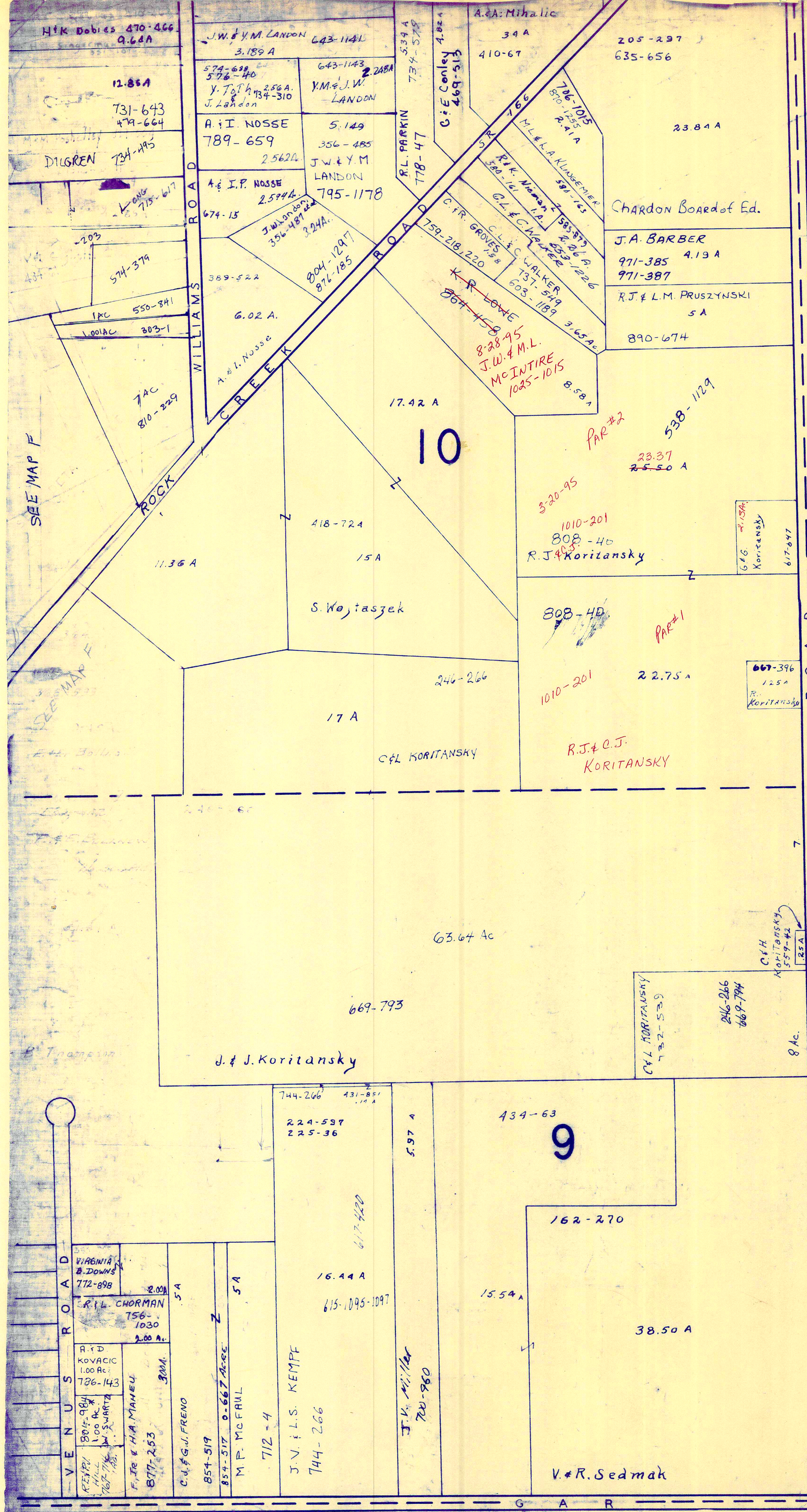
12.61 A
734-646

10.14 A
Rock Creek Inv. Co.
653-282

12.61 A
734-646

10.14 A
Rock Creek Inv. Co.
653-282

12.61 A
734-646

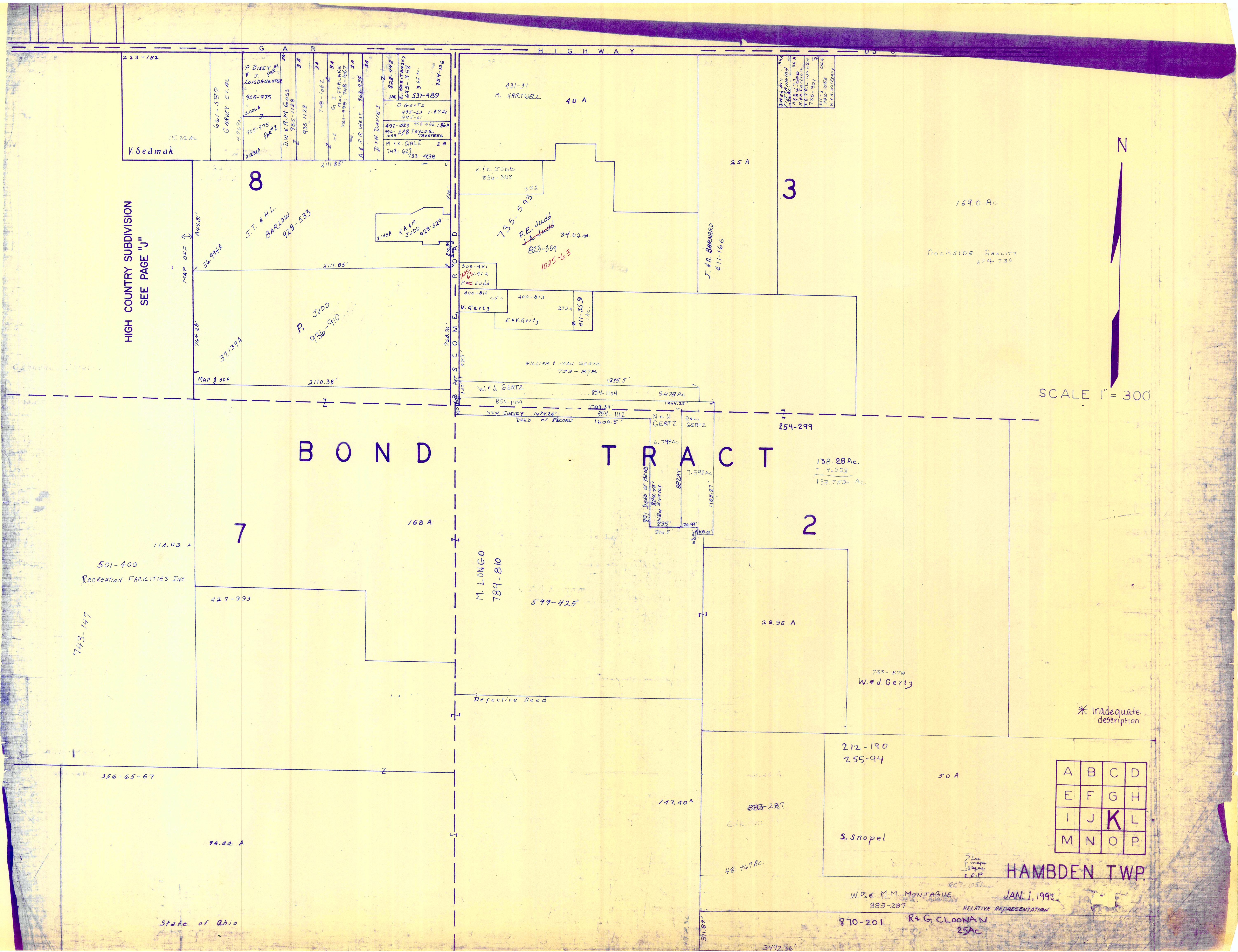


SEE PAGE "K"

* Inadequate description

HAMB DEN TWP
JAN. 1, 1995

RELATIVE REPRESENTATION



HIGH COUNTRY SUBDIVISION
SEE PAGE "J"

N

SCALE 1" = 300'

BOND TRACT

A	B	C	D
E	F	G	H
I	J	K	L
M	N	O	P

HAMBDE TWP.

W.P. & M.M. MONTAGUE
883-287
JAN. 1, 1995
RELATIVE REPRESENTATION

R + G. CLOONAN
25Ac

State of Ohio

* Inadequate description

Defective Deed

743-147

501-400
RECREATION FACILITIES INC.

DOCKSIDER REALTY
674-735

J. F. BREWARD
611-166

M. LONGO
789-810

P.E. Judd
LA. Judd
823-359
1025-63

P. Judd
936-910

J.T. & H.L.
BARLOW
928-533

K.F.D. Judd
836-348

431-31
M. HARTWELL
40 A

V. Sedmak

P. DIXEY
& J. PARK
LOISDAUGHTER
905-975

D. GERTZ
495-43
1-87Ac
495-6

W.P. & M.M. MONTAGUE
883-287

223-182

300A

905-975

935-1128

935-1128

718-062

718-062

781-975

781-975

928-533

928-533

828-448

828-448

645-358

645-358

922A

922A

854-326

854-326

MAP OFF

36.994A

MAP OFF

37.139A

2111.85'

2110.38'

2111.85'

268.70'

130'

214.5'

214.5'

1105.87'

1105.87'

1105.87'

311.87'

338-461

338-461

400-811

400-811

400-813

400-813

373A

373A

617-309

617-309

W.J. GERTZ

854-1104

5478Ac

1835.5'

NEW SURVEY 1474.26'

DEED OF RECORD

1600.5'

1709.34'

1444.35'

254-299

138.28Ac

7.528

133.752Ac

N + H GERTZ

6.799Ac

7.592Ac

1105.87'

126.91'

118.01'

882A

882A

7.592Ac

1105.87'

126.91'

118.01'

214.5'

214.5'

1105.87'

126.91'

118.01'

M. LONGO

789-810

599-425

28.96 A

733-878
W.J. Gertz

212-190
255-94

50 A

883-287

S. Snopel

48.467Ac

W.P. & M.M. MONTAGUE
883-287

R + G. CLOONAN
25Ac

870-201

25Ac

3492.36'

G A R HIGHWAY US 6

3

170.00 A.

DOCKSIDE REALTY
674-738

BOND TRACT

R O A D
T O W N S H I P
L L E
V I
M O N T V I L L E

2

1.	826-36 701-877	229-504 249 AC	5A	200.75'
	T.E. MICCO			
2.	430-552	498 A.		200'
	R. & B. Grant 988-950 55			
3.	980-722 874-565	498 A.		200'
	K.S. & K.A. BENA			
4.	657-263	498 A.		200'
	R.E. CROMBIE II. 247-47 255-369 257-14			
5.	755-1127	498 A.		200'
	G.M. NEAL & M.R. HARWELL 259-46			
6.	259-219	498 A.		200'
	R. Kavaras			
7.	281-345 460-398	498 A.		200'
	H. Tomasin			
8.	270-459 460-440 844-206	498 A.		200'
	D.C. SAE IGA 259-551			
9.	424-826 880-177	498 A.		200'
	A.M. Burnett			
10.	477-502 126-580	498 A.		200'
	MRS. & ALICE L. BOGAB			
11.	997-287	5187 A.		200'
	P.M. & M.A. MALLOY			

817-625
817-647

S. Snopel

W.P. & M.M. MONTAGUE
885-287
484.7 AC.

R.M. & G.A. CLOOVAN
870-201
25 AC.



SCALE 1" = 300'

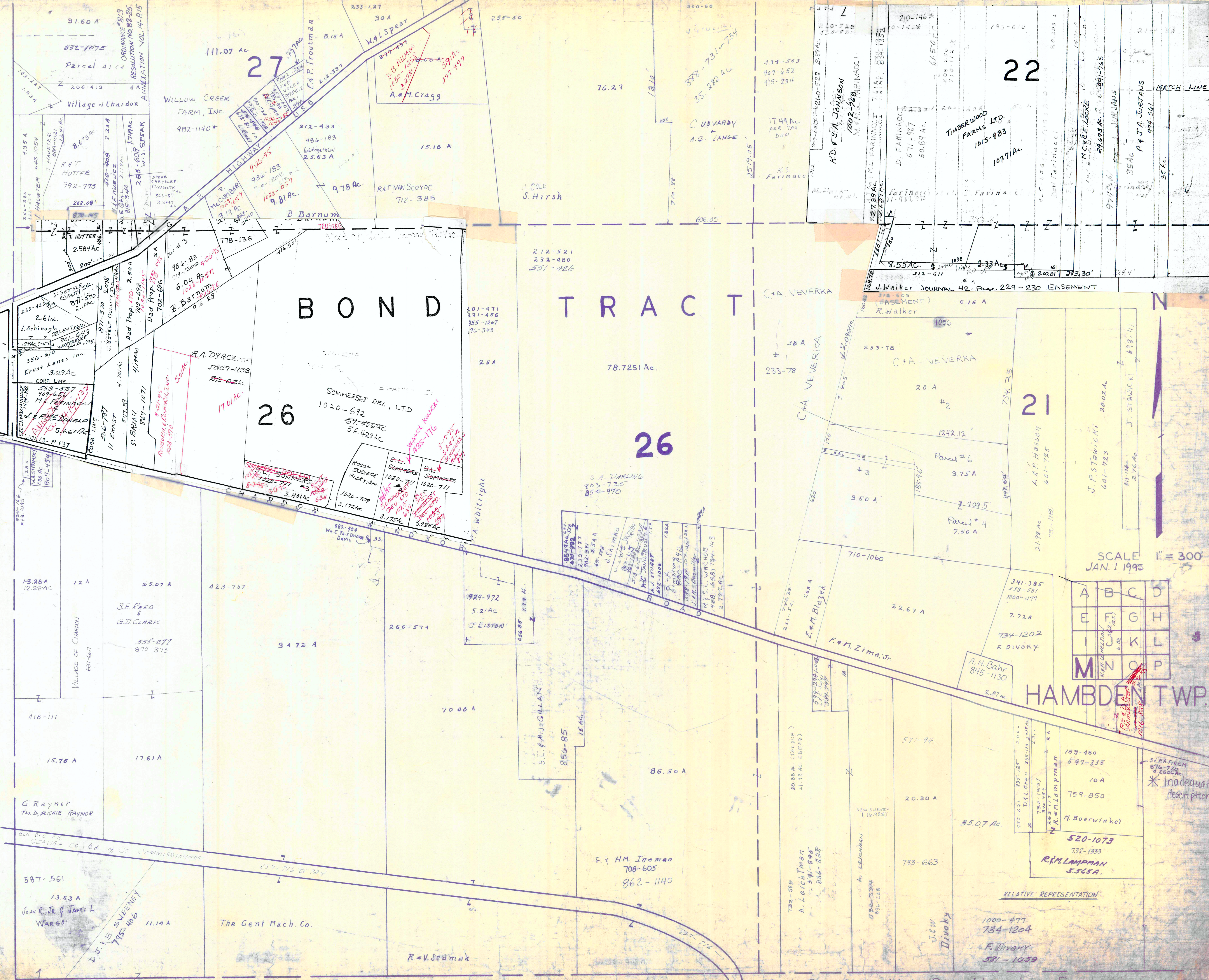
RELATIVE REPRESENTATION

A	B	C	D
E	F	G	H
I	J	K	L
M	N	O	P

HAMB DEN TWP.
JAN / 1995

* Inadequate description

CHARDON TOWNSHIP



27

22

BOND TRACT

26

26

21

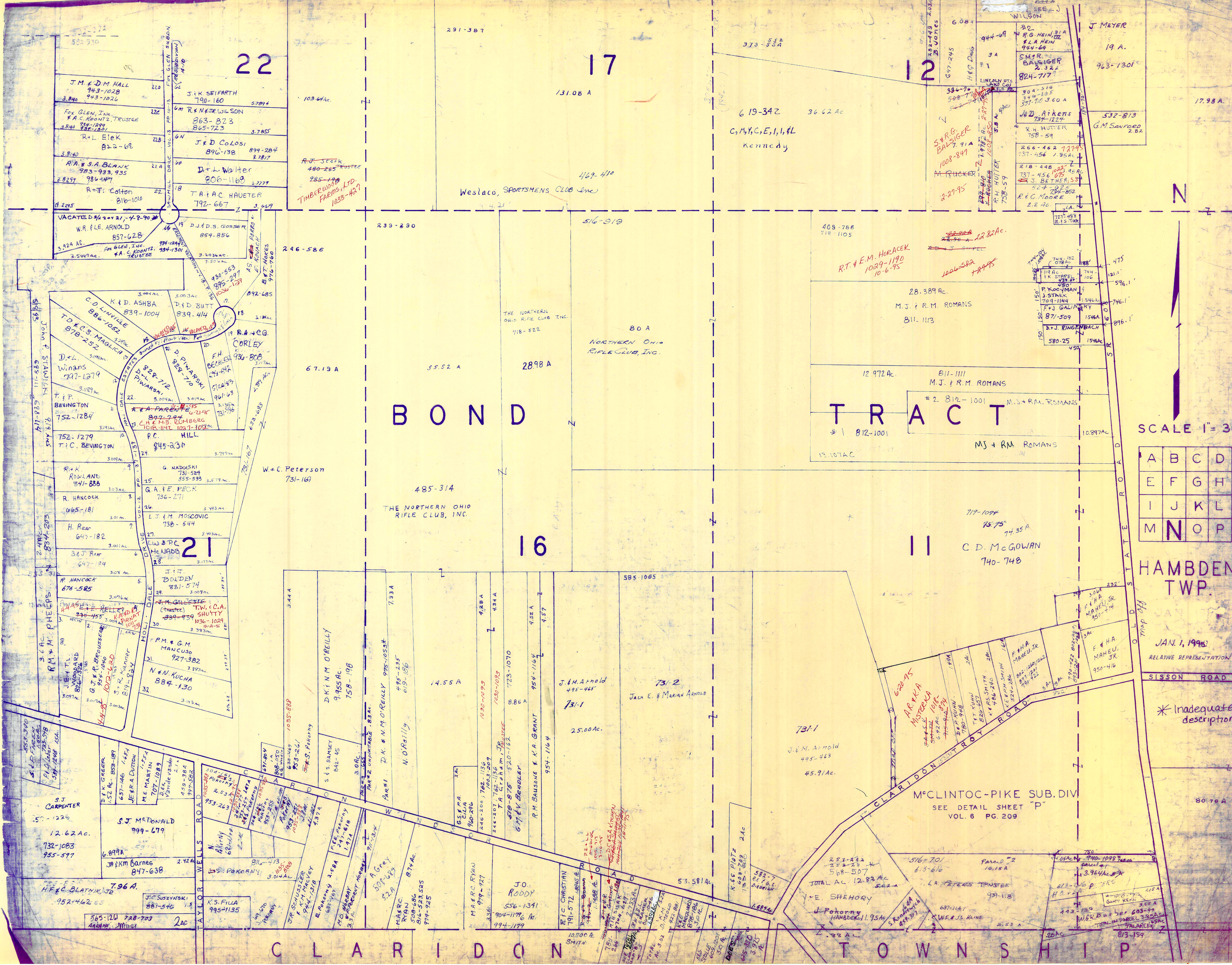
SCALE 1" = 300'
JAN. 1 1995

A	B	C	D
E	F	G	H
I	J	K	L
M	N	O	P

HAMBDEN TWP.

RELATIVE REPRESENTATION

* Inadequate description



22

17

12

21

16

11

BOND

TRACT

SCALE 1" = 300'

A	B	C	D
E	F	G	H
I	J	K	L
M	N	O	P

HAMDEN TWP.

JAN. 1, 1995
RELATIVE REPRESENTATION

SISSON ROAD

* Inadequate description

80.70 A

CLARIDON TOWNSHIP

356-65-67

94 A

427-993

147.40 A

48.467Ac

W.P. & M.M. MONTAGUE
883-287

SEE MAP
PGS.
K, L & P

R.M. + G.A. CLOONAN
870-201

25Ac

State of Ohio

17.98 A

7

2

± 100 A

764-769

P.A. SPISAK

260-274

P.A. SPISAK

764-769

31.80 A

P. Spisak

266-581

BOND

562.34 A

6

TRACT

State of Ohio

3186.13'

631-332

80.70 A

669-1087,
1088

J. & K. Mobasseri

G.S.J. KOENIG

15,967 A

Vol. 6

5 Pg.

11-14

3B

3A

ROAD

2

1

M. HERBERT
721-727
424

765-221
W.P. STEINBENDER
866-1116
870-421
42.272 Ac

VACATED 4-20-71
J.P. ROSS
866-1116
870-421
42.272 Ac

749-22, 631-173
J.P. M. WILSON
2185 AC

RE. WYATT
784-177
746-660
746-660
2.116 AC

J.A. BARTONE
2.116 AC

J. ABBONERAY
2.86 AC
453-857

JAN. POWERSKY
2.86 AC
502-72
1026-672

667-252 to 255

(22.46 A) HAMBDEY
TOTAL AC = 252.17 AC

Complete Construction
Service, Inc.
673-1329

parcel # 2 49.67 AC

* 667-252

508-1073
G.L. GROH
621-823
667-252 to 255
parcel # 1
27.90 AC

See Map P

STATE

OLD

J.P. & H.J.
GRANTHAM
949-1412

#.29 AC

F. LIOTTA + D. AMANTEA
679-1228

2.09 AC

T. & M. WHEELER
678-1104
2.15 AC

150'

150'

750-789
2.04 AC
M.T. FLYNN

523-461, 1014-1017
1000-581, 199 AC

MAY. LICHENE
410-318 AC

762-077
870-1245 D. MACK

K.D. DISIEN
410-318 AC
1014-1011
8-11-95

C.K. SHIVATRA
790-54
5.44 AC

C L A R I D O N T O W N S H I P

SCALE 1" = 300'

A	B	C	D
E	F	G	H
I	J	K	L
M	N	O	P

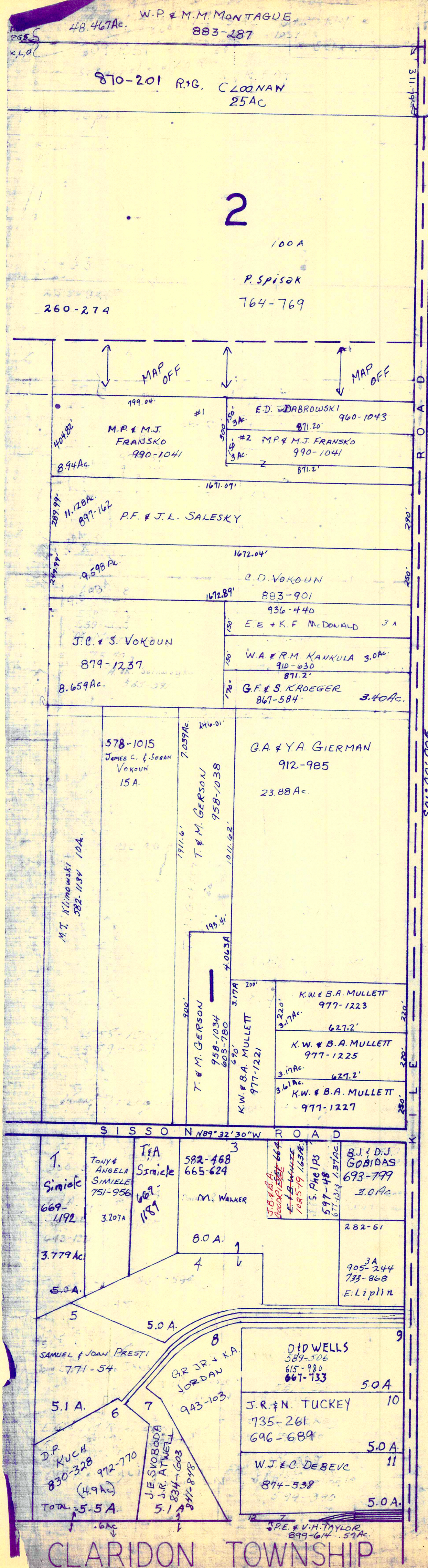
HAMBDEY TWP.

JAN. 1, 1995

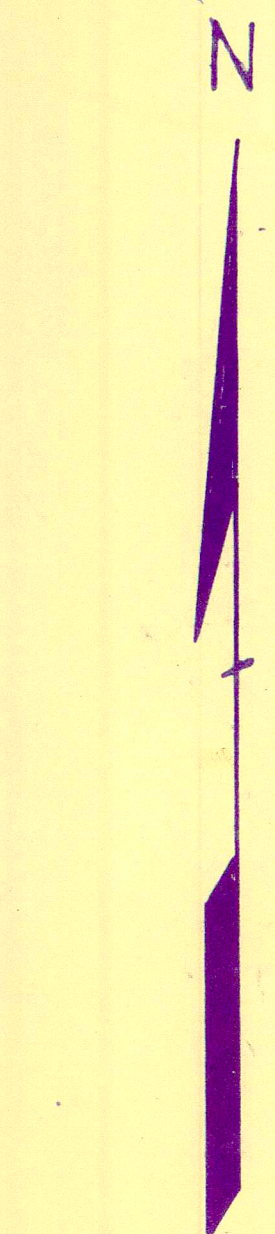
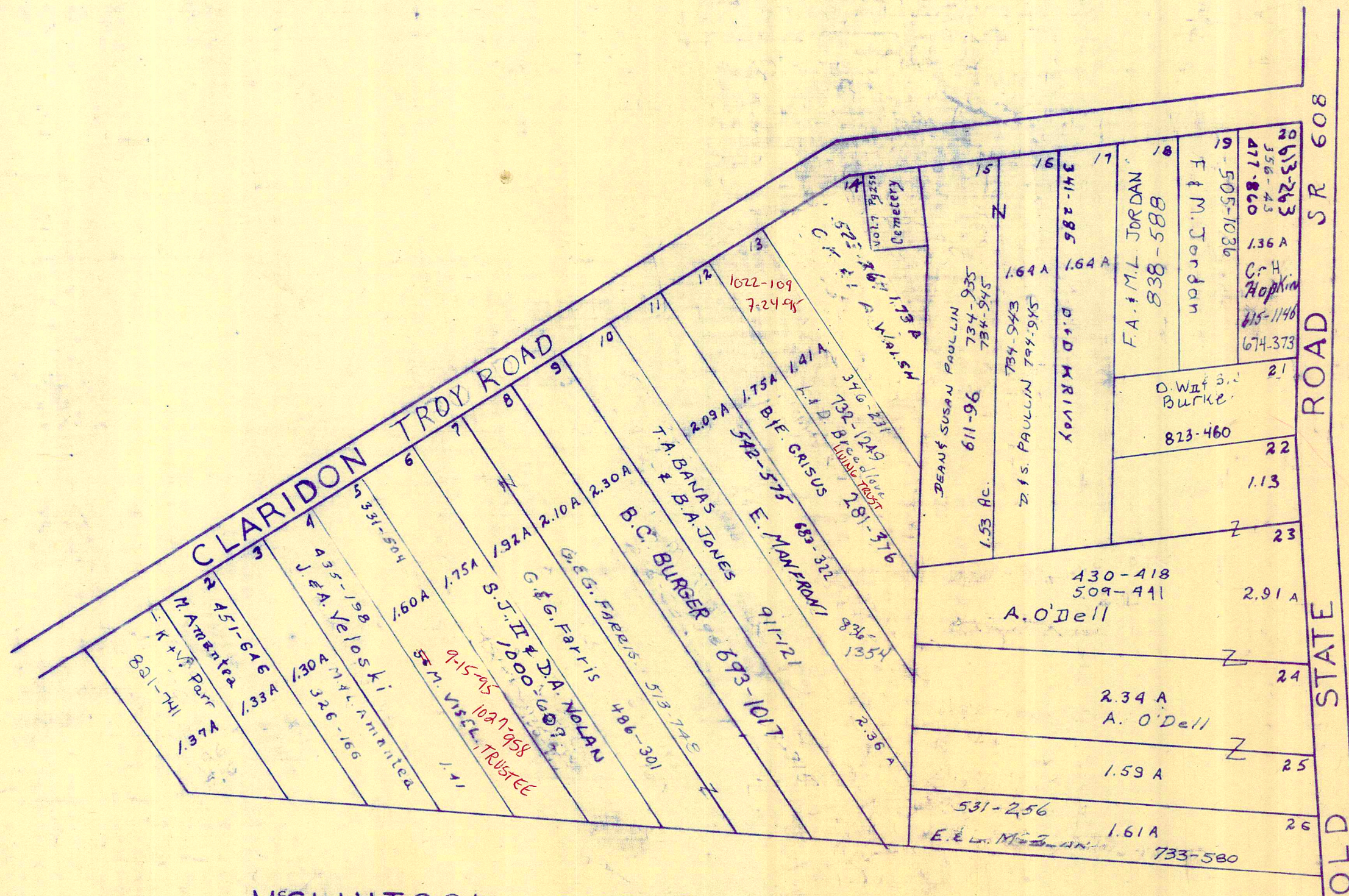
RELATIVE REPRESENTATION

* Inadequate description





MONTVILLE TOWNSHIP



SCALE 1" = 300'
JAN 1, 1995

A	B	C	D
E	F	G	H
I	J	K	L
M	N	O	P

HAMB DEN TWP.

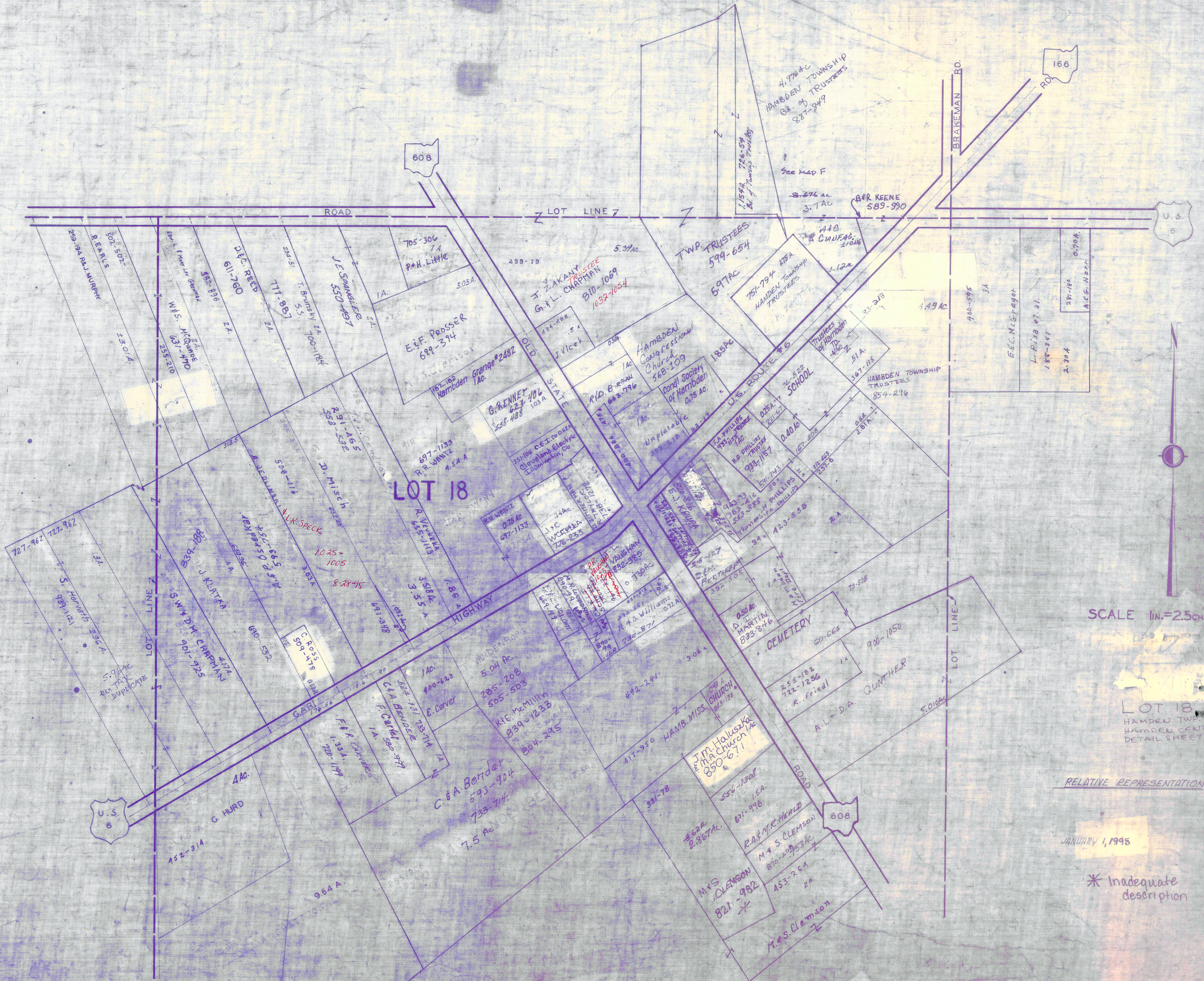
RELATIVE REPRESENTATION

* Inadequate description

HAMB DEN CENTER AND VICINITY

HAMB DEN TP.

HAMB DEN CENTER AND VICINITY



SCALE 1 in. = 2.5 ch. or 165 ft.

LOT 18
HAMB DEN TWP.
HAMB DEN CENTER
DETAIL SHEET

RELATIVE REPRESENTATION

JANUARY 1, 1995

* Inadequate description

HAMB DEN 22